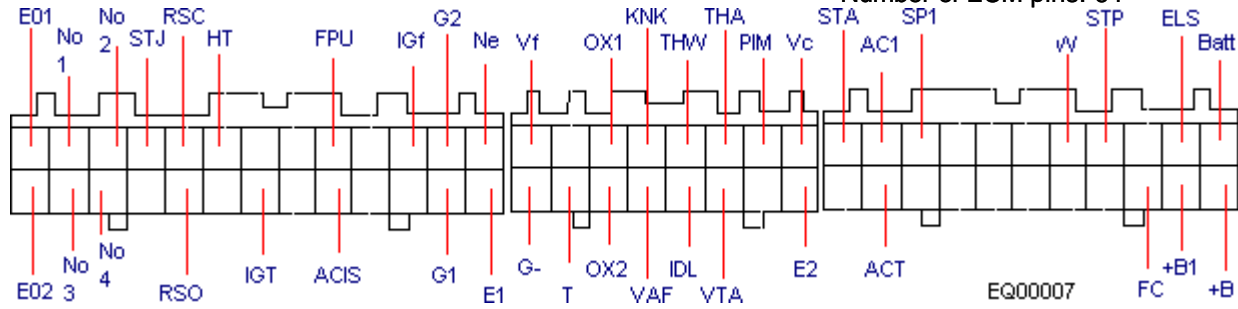


Number of ECM pins: 64



Pin	Connection	Test condition	Volts/Duty Cycle/Frequency
26 pin			
E01	earth	ignition on/running	0.25 max
No.1	injector no.1	ignition on	nbv
		running cold	3.5 ms
		running hot	2.3 ms
		2000 rpm	2.1 ms
		3000 rpm	2.0 ms
		snap acceleration	8.0+ ms
		deceleration	zero
No.2	injector no. 2	ignition on	nbv
		running cold	3.5 ms
		running hot	2.3 ms
		2000 rpm	2.1 ms
		3000 rpm	2.0 ms
		snap acceleration	8.0+ ms
		deceleration	zero
STJ	cold start injector		
RSC	ISCV	ignition on/running	switching
HT	OS	ignition on	nbv
		engine running, hot	0.25 max
FPU	Fuel pressure VSV	ignition on/engine cold	nbv
		fuel temperature hot	0.25 max
IGF	igniter (amplifier)	ignition on/running	switching
G1	pickup sensor : t2	cranking:	0.7 to 1.0
		idle:	AC 2.0v+ (peak to peak)
		cruise:	AC 11.0v+ (peak to peak)
			AC 14.0v+ (peak to peak)
G2	pickup sensor : t2	cranking:	AC 2.0v+ (peak to peak)
		idle:	AC 11.0v+ (peak to peak)
		cruise:	AC 14.0v+ (peak to peak)
NE	pickup sensor : t2	cranking:	AC 2.0v+ (peak to peak)
		idle:	AC 11.0v+ (peak to peak)
		cruise:	AC 14.0v+ (peak to peak)
E02	earth	ignition on/running	0.25 max
No.3	injector no.3	ignition on	nbv
		running cold	3.5 ms
		running hot	2.3 ms
		2000 rpm	2.1 ms
		3000 rpm	2.0 ms
		snap acceleration	8.0+ ms
		deceleration	zero
No.4	injector no.4	ignition on	nbv
		running cold	3.5 ms
		running hot	2.3 ms

Pin Tables Copyright Equiptech

		2000 rpm	2.1 ms
		3000 rpm	2.0 ms
		snap acceleration	8.0+ ms
		deceleration	zero
RSO	ISCV	ignition on/running	switching 8.0 to 14.0
IGT	ignition	idle	switching 0.7 to 1.0
ACIS	ACIS VSV	ignition on	nbv
		actuated	0.25 max
E1	earth	ignition on/running	0.25 max
16 pin			
VF	SD connector		
OX1	OS		
KNK	knock sensor	KS active	1.0 approx (peak to peak)
THW	CTS	ignition on/running	80°C
THA	intake ATS	ignition on/running	
PIM	vacuum sensor	ignition on	3.3 to 3.9
VC	sensor power source	ignition on/running	4.0 to 6.0
G -	TDC, RPM sensor return : t1	ignition on/running	0.25 max
T	SD connector	ignition on/running	
		not actuated	
		actuated	
OX2	SD connector		
VAF	variable resistor		
IDL	TPS	ignition on/running	
		throttle open	4.0 to 6.0
VTA	TPS	ignition on/running	
		throttle fully closed	1v or less
		throttle fully open	4.0 to 6.0v
E2	earth	ignition on/running	0.25 max
22 pin			
STA	starter switch	cranking	nbv
A/C1	magnet switch	ignition on/running	
		air conditioning on	8.0 to 14.0
SP1			
W	SD warning lamp	ignition on/running	
		no faults present	nbv
		faults present	zero
STP	stop light switch		
ELS	defogger switch		
BATT	battery supply t:30	ignition on/off	nbv
ACT	A/C amplifier	A/C on	4.5 to 5.5
FC	pump relay		
+B1	EFI main relay supply: t4	ignition on/running	nbv
+B	EFI main relay supply: t4	ignition on/running	nbv

< END >